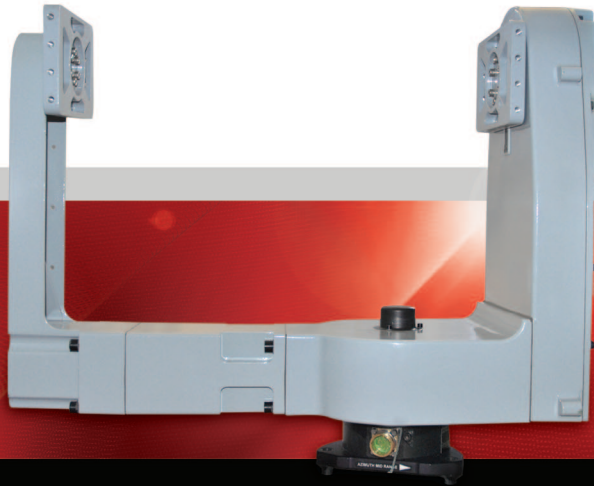




OBZERV



# ARGC-2400 Pan & Tilt

THE ARGC-2400 PAN & TILT has been especially designed to remotely control hefty and heavy cameras. With its "U" configuration, this Pan & Tilt can support payload up to 100 kg. Furthermore, it can sustain all kinds of conditions such as but not limited to maritized air and sandy environment, while offering 0.056° accuracy in both azimuth and elevation. This robust and unique Pan & Tilt, is custom-made for the ARGC-2400 with fittings and vibration free hardware that will meet your stringent requirements and high standards. The ARGC-2400 Pan & Tilt can be installed on a tripod, or a mast for a permanent installation.

A standard and great feature of the ARGC-2400 high performance Pan & Tilt is its Slip Ring, allowing the operator to perform 360° surveillance from a single location. The superior stability of this Pan & Tilt makes it the perfect unit for high precision surveillance at long distances.

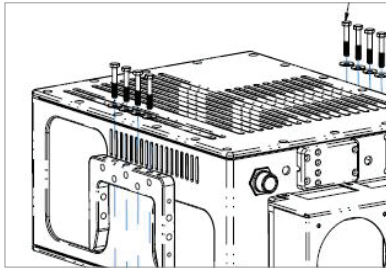
Each unit is tested in our Factory to validate the specifications accuracy.

## KEY BENEFITS

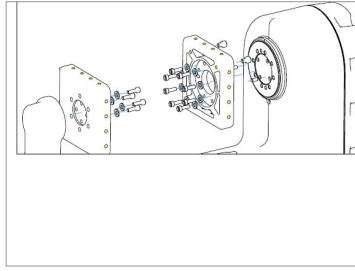
- Zero backlash for maximum accuracy
- Supports payloads up to 100 kg
- Fully environmentally-sealed
- Two independent drive units
- Fail-safe brakes on both drives
- Slip ring for continuous rotation
- Designed to comply with MIL-STD-810E
- Rugged design

## OBZERV CUSTOMS

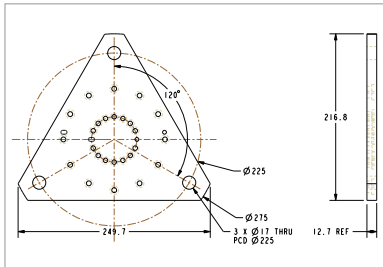
- **Custom-made umbilical cables:** one umbilical between the camera and the pan & tilt adjusted as short as possible to consequently allow the camera to move freely. There is another a second long umbilical cable to connect to the master control unit.
- An **Obzerv validation protocol** is performed in our factory, testing speed and Pan & Tilt limits.
- Obzerv provides **integrated software**, to control both the camera and the Pan & Tilt.
- An **optional joystick** to control the camera and the Pan & Tilt.
- A **proprietary-design spacer** is added in the Pan & Tilt structure to perfectly fit the ARGC-2400 in the arm.



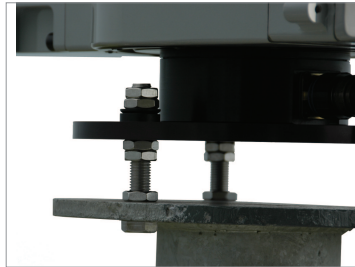
Brackets are installed on the ARGC-2400 to fit the head unit on the Pan & Tilt.



Left and right hubs are installed on the Pan & Tilt and are equipped with stoppers to prevent the camera from tilting too far.



Interface plate to fit on a mast in permanent installations: install your own mast with a plate matching the Obzerv template.



A lock-nut system designed to be vibration-proof with an adapter plate are provided to allow a permanent installation of the Pan & Tilt.

#### 'U' CONFIGURATION – KEY SPECIFICATIONS

DESCRIPTION	TOLERANCE
WEIGHT	37 kg
PAYLOAD CAPACITY	100 kg
MEAN VELOCITY	Between 0.0056°/s and 50°/s in both azimuth and elevation
ACCURACY	0.056° (1 $\sigma$ ) in both axis
REPEATABILITY	0.017° (1 $\sigma$ ) in both axis
ELEVATION RANGE	-37° to 85°
AZIMUTH RANGE CONTINUOUS	360°
OPERATING VOLTAGE – LIMIT	20 to 32 Vdc
OPERATING TEMPERATURE	-32°C to +71°C